

TYPICAL

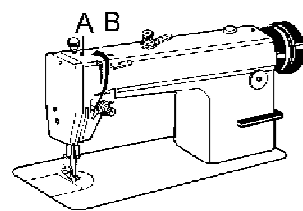
GC6150M/H/B SERIES

HIGH SPEED LOCKSTITCH SEWING MACHINE



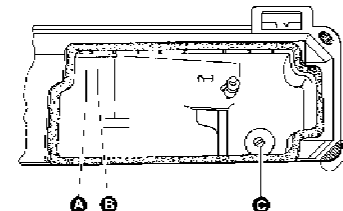
INSTRUCTION BOOK
PARTS CATALOGUE

※NOTE



Before putting a new machine into operation, remove the plugs(A) on the top of the arm and replenish sufficient amount of oil, then lift the presser foot and run the machine at a low speed of 2000 spm to check oil distributing condition through oil check window. When lubricating is normal, keep the machine run in at this speed for 30 minutes, then increase the running speed gradually. After one month run-in operation, the machine can be run at the Max speed under normal working

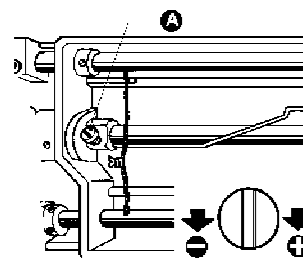
1. OIL FILLING



(1) The oil amount in the oil reservoir is controlled through the reference marks A and B shown in Fig2. The mark A indicates the max oil amount level, the mark B for the min. oil amount level. If the oil amount level is under the mark B replenish the oil reservoir with oil in time reservoir with oil in time.

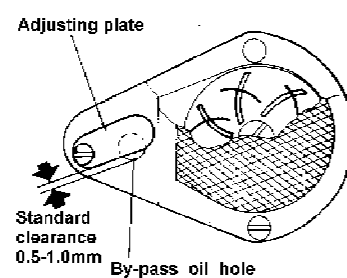
(2) When filling oil, loosen the oil draining screw (c), drain off the remaining oil in the oil reservoir completely, clean the oil reservoir and tighten the oil draining screw(c), then fill the oil reservoir with fresh oil.

2. ROTATING HOOK OIL AMOUNT ADJUSTMENT



Adjust the oil amount of the rotating hook by turning the oil amount adjusting screw (A). Turn the screw(A) clockwise (in the "+" direction) to increase the oil amount; turn it counter-clockwise (in the "-" direction) to decrease the oil amount.

3. OIL PUMP ADJUSTMENT

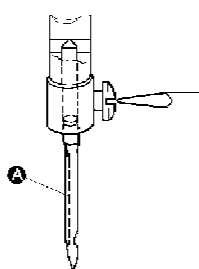


In ordinary operation, adjustment is not required for the oil pump. If oil splashing does not occur in the oil check window when the machine runs at a low speed, close the clearance of the bypass oil hole.

There isn't by-pass oil hole in GC6-9 series.

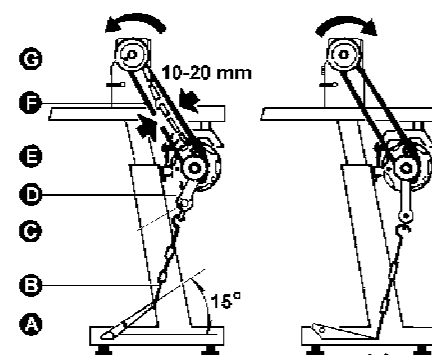
4. NEEDLE INSTALLATION

Turning the balance wheel to lift the needle bar to the upper end of its stroke. Loosen the needle clamp screw while keeping the long groove of the needle leftward, fully insert the needle shank up to the bottom of the needle socket, then tighten the needle clamp screw.

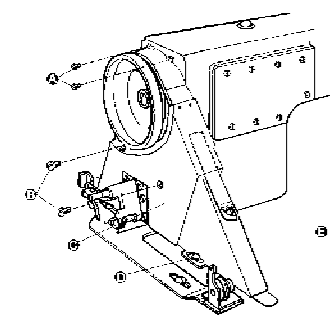


5. CONNECTION OF THE CLUTCH LEVER WITH THE PEDAL

(1) The optimum tilt angle of pedal is approximately 15 deg.
(2) Adjust the clutch so that the clutch lever (c) align with the draw bar (B) as shown in Fig 6
(3) The machine pulley should rotate counter clockwise when viewed from the outside of it. The rotating direction of motor pulley can be reversed by turning the plug of the motor at 180 deg.
(4) Adjust the tension of O-Belt (F) by moving the motor up and down, the proper tension of the O-belt is a slack of 10-20 mm when the belt is depressed at the center of the belt by finger.

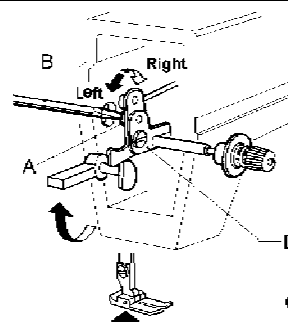


6. BELT COVER INSTALLATION



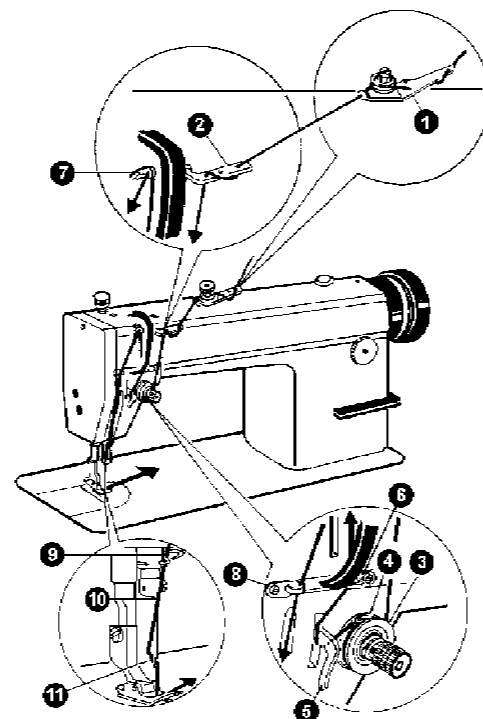
Install the belt cover for the sake of safety.
Install belt cover(C) to arm with screw(A) and screw(B) and install belt cover(E) on board with screw(D).
Note: there aren't screw(A) and screw holes on belt cover in GC6-9.

7. ADJUST THE OPENING TIME OF THE TENSION DISCS



Within the presser foot lift range, the opening time of the tension discs can be adjusted as follows:
(1) Remove the rubber plug from the back of the arm and Loosen the screw (A) of the knee lift lever (left)
(2) Move the tension releasing cam (D) leftward for earlier opening or rightward for Later opening. It will facilitate the adjustment if putting a block under the presser foot lift.

8. THREADING

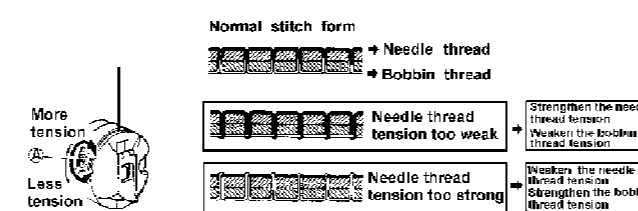


To thread the needle thread, raise the needle bar to the upper end of its stroke, lead the thread from the spool and perform threading as shown in Fig9. To draw the bobbin thread, hold the end of the needle thread and turn the balance wheel to lower the needle bar and then lift it to its highest position. Pull the ends of needle thread and bobbin thread forward under presser foot.

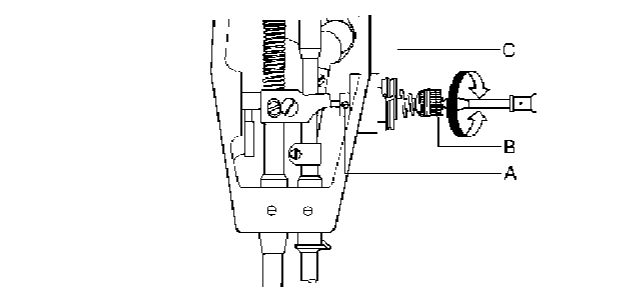
10. ADJUST THE PRESSURE OF PRESSER FOOT

Pressure of the presser foot is adjusted in accordance with thickness of materials to be sewn. First loosen the lock nut (A), for heavy materials, turn the pressure regulating thumb screw as shown in Fig 11 (a) to increase the pressure, while for light materials, turn the pressure regulating thumb screw as shown in Fig 11(b) to decrease the pressure, then tighten the lock nut (A).
The pressure of the presser foot is recommended to be less as long as normal feeding is ensured.

11. THREAD TENSION ADJUSTMENT

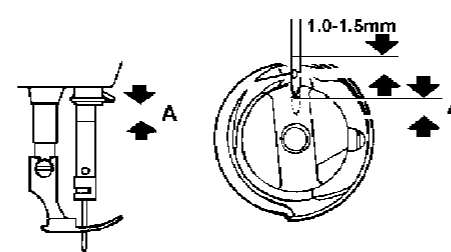


Thread tension should be determined in accordance with the stitch obtained by adjusting the tension of the bobbin thread and needle tension (Fig.12).



The tension of the bobbin thread: to be adjusted by turning the tension spring regulating screw of the bobbin case. After adjusting, insert the bobbin into the bobbin case and hold the end of the thread from the bobbin case to hang the bobbin case, if the bobbin case falls slowly and evenly, the proper tension of the bobbin thread is obtained.
The tension of needle thread: to be adjusted by turning the thumb nut.
The stroke of the thread take-up spring runs from 6mm to 10mm, when sewing very thin fabrics, reduce the thread take-up spring tension and increase the thread take-up spring stroke, where as increase the thread take-up spring tension and reduce the thread take-up stroke when sewing very thick fabrics.
Adjusting the thread take-up spring tension: (Fig.13) First loosen the set screw (A), Turn the tension stud (B) counter-clockwise to decrease the tension of the thread take-up spring (c) to zero, then turn the tension stud (B) clockwise till the spring (c) comes to the notch of the tension regulating bushing, and again turn the tension stud (B) halfway back (counter clockwise), After the adjustment, tighten the set screw (A).
Adjusting the thread take-up spring stroke: (Fig.14) loosen the set screw (B) turn the stud (C) clockwise to increase the stroke or turn stud (C) counter-clockwise to decrease the stroke After the adjustment, tighten the set screw (B).

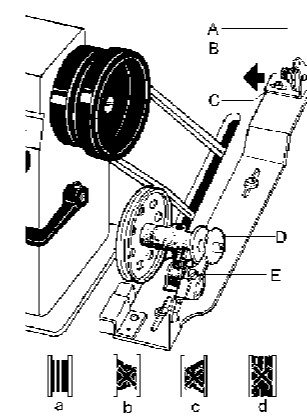
12. ADJUST THE SYNCHRONIZATION OF THE NEEDLE WITH ROTATING HOOK



When lifting the needle bar from its lowest position of the stroke to the distance A, the hook point D of the bobbin should align with the center line of the needle and be 1.0-1.5 mm above upper end of the needle eye (Fig.15)

| | M | H | B |
|---|-----|---|-----|
| A | 202 | 2 | 2.4 |

9. WINDING INSTALLATION AND ADJUSTMENT



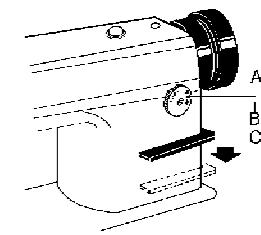
The bobbin winder pulley should Align with the V-belt and there should be some clearance between them. When the bobbin winder stop latch lever is depressed, the V-belt should be in touch with the bobbin winder pulley in order that the bobbin winder pulley can be driven by the V-belt.

The thread wound on the bobbin should be neat and tight if not tight, adjust the winding tension by turning the tension stud nut (A) of the bobbin winder tension bracket, when the thread wound on the bobbin does not present a cylindrical shape as shown in Fig.10 (a), Loosen the set screw(B) of the bobbin winder tension bracket and move the bracket (C) leftward or rightward, if the thread is wound as shown in the figure (b), move the bracket leftward or rightward of wound as shown in the figure(c), move it leftward. After positioning the bracket adequately, tighten the set screw (B).
Do not overfill the bobbin, The optimum wound length of the thread will fill about 80% of the bobbin capacity. This can be adjusted by the screw(E) of the bobbin winder stop latch.

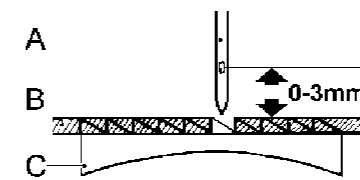
13. ADJUSTMENT OF STITCH LENGTH LENTH AND ADJUSTMENT

The stitch length can be adjusted by turning the dial (A). The figures on the face (B) of the dial show the stitch length in mm, the reverser feed lever must be depressed by another while adjusting the stitch length. The reverse feeding starts when the reverse feed lever (c) is depressed, the machine will feed forward again if the reverse feed lever is released.

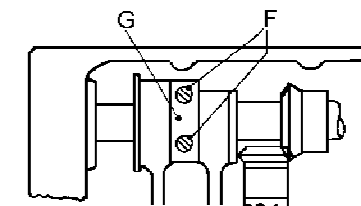
NOTE: Push the press key "PUSH" to adjust the stitch length. It's designed to prevent knob from rotating at working in GC6-8 and GC6-9.



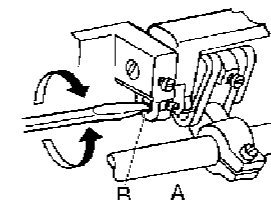
15. ADJUST THE SYNECHRONILATION OF THE NEEDLE MOTION WITH FEED MOTION



To adjust the feed dog position (C), first should release the two set screw (F) and turn around the balance wheel by hand. When the needle (A) point reaches the surface of the throat plate (B), the top of the feed dog (C) should be flush with the throat plate surface.

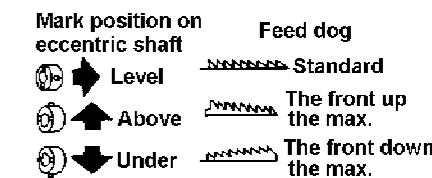


16. STITCHLENGTH ERROR ADJUSTMENT

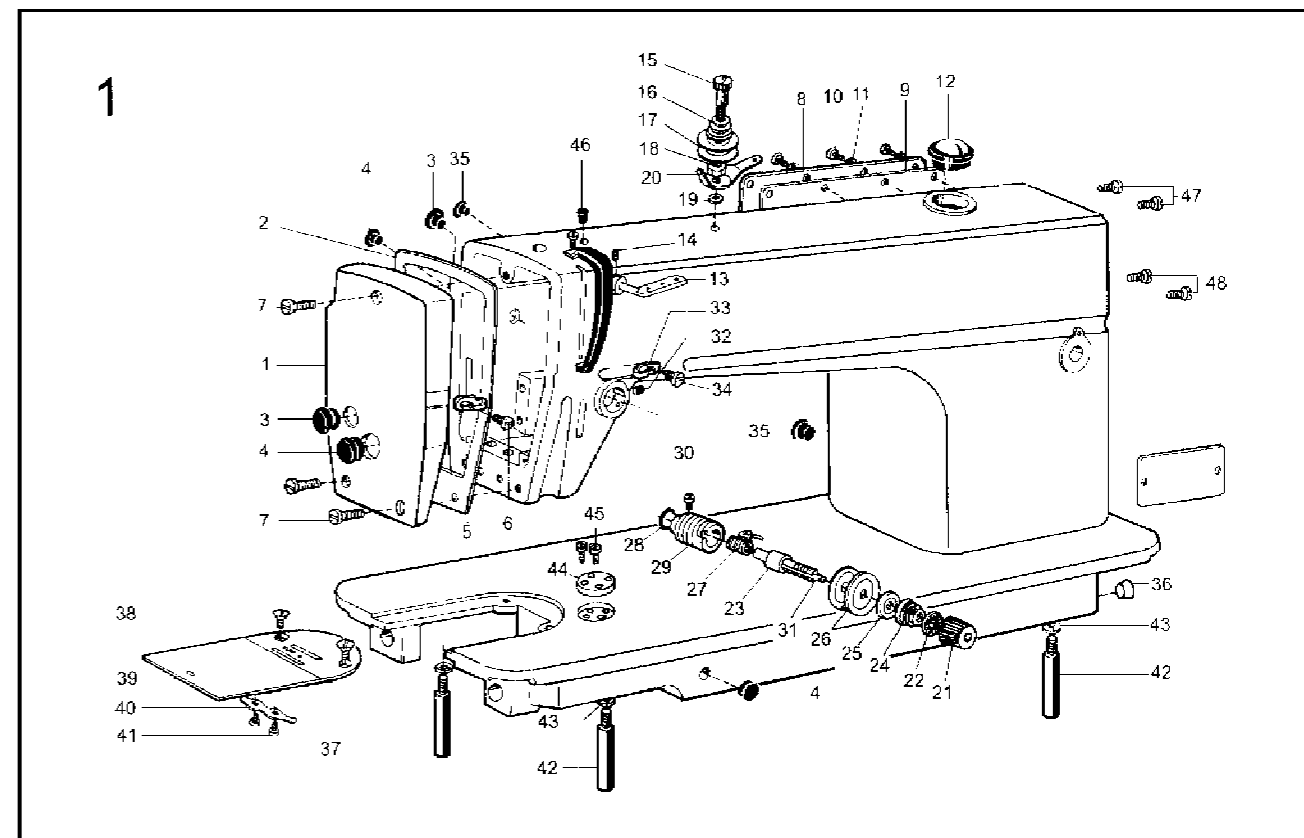


Loosen screw (A) to adjust the stitch length adjusting cam (B). Turn it rightward to narrow the stitch length as forward sewing, and widen it as reverse sewing; turn it leftward to widen the stitch length as forward sewing, and narrow it as reverse sewing.

17. FEED DOG HORI ONTALTY ADJUSTMENT

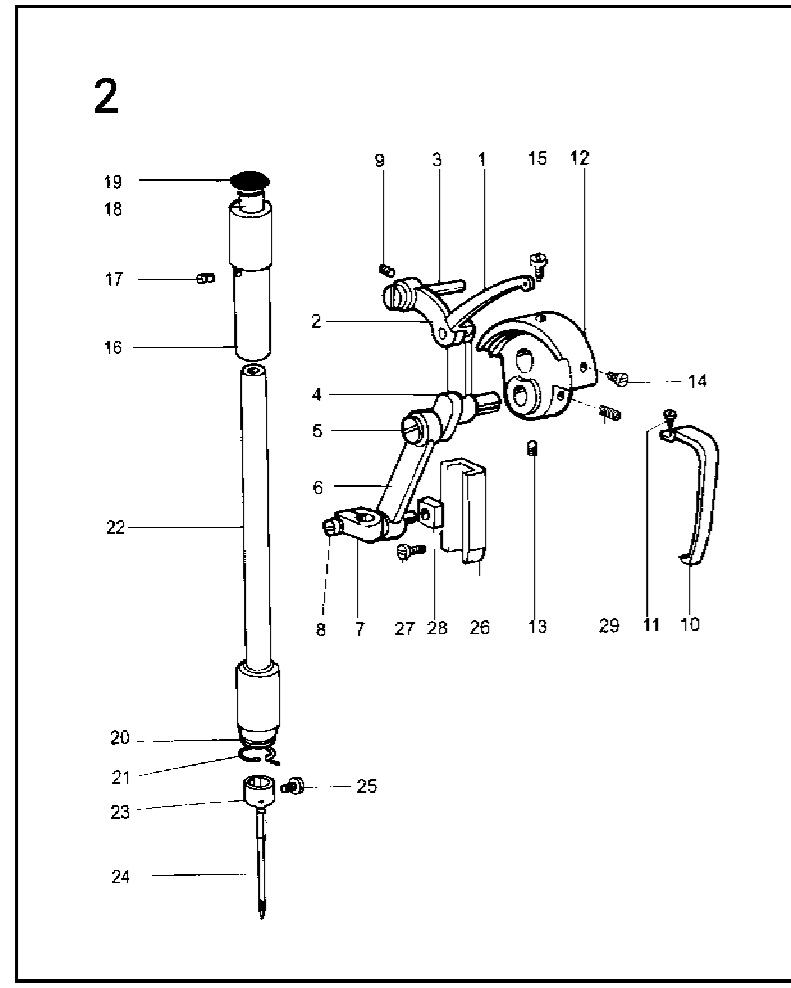


Heighten the front of feed dog to prevent fabric from wrinkling, lower the front of feed dog to prevent fabric from deflection, breaking of hook thread.



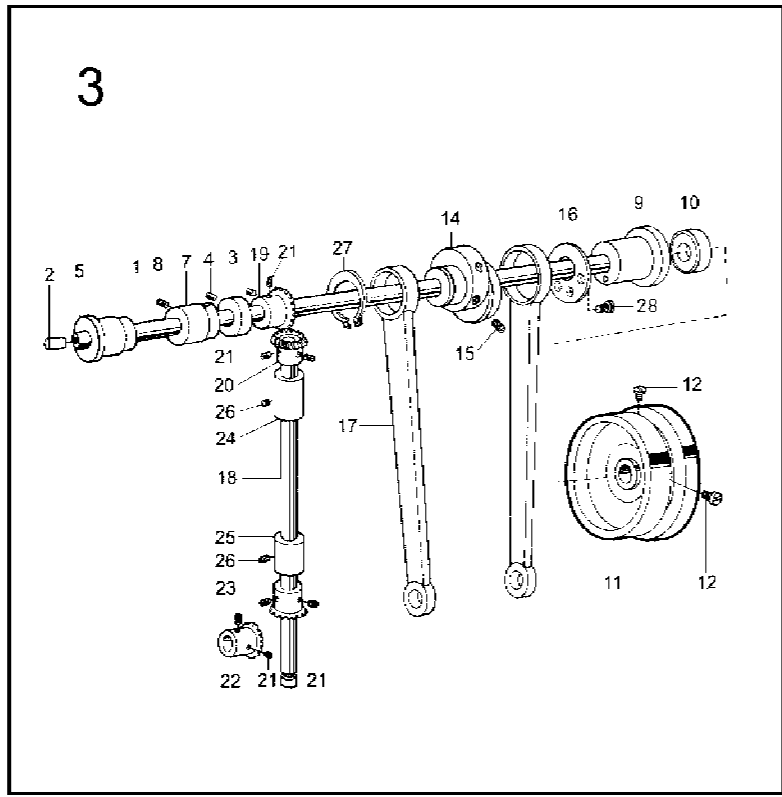
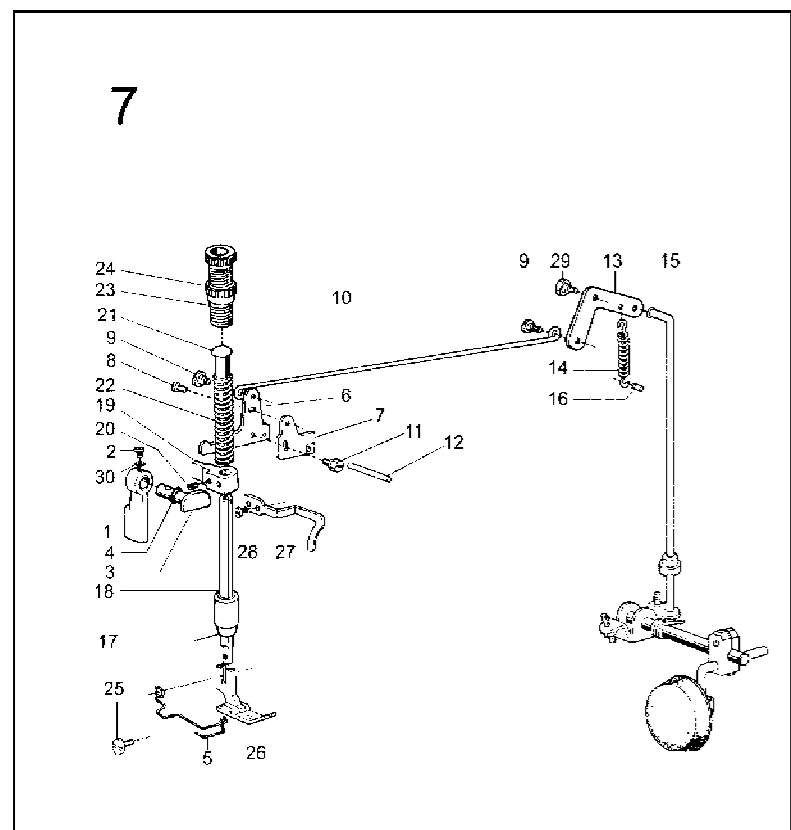
1. ARM BED AND ITS ACCESSORIES

| No. | Ref. No. | Description | Qt. | | | No. | Ref. No. | Description | Qt. | | |
|-----|------------|-----------------------------------|-----|---|---|-----------|-----------------------------|-----------------------------------|-----|---|---|
| | | | M | H | B | | | | M | H | B |
| 1 | 124120001 | Face plate | 1 | 1 | 1 | 25 | 022160004 | Thread tension releasing disc | 1 | 1 | 1 |
| 2 | 124120002 | Gasket for Face plate | 1 | 1 | 1 | 26 | 022160005 | Thread tension disc | 2 | 2 | 2 |
| 3 | 022130003 | Rubber plate | 2 | 2 | 2 | 27 | 022160006 | Thread take-up spring | 1 | 1 | 1 |
| 4 | 022130004 | Rubber plate | 3 | 3 | 3 | 048110002 | Thread take-up spring | 1 | 1 | 1 | |
| 5 | 022130005 | Thread guide on face plate | 1 | 1 | 1 | 28 | 022160011 | Rubber ring | 1 | 1 | 1 |
| 6 | 022130006 | Thread guide screw | 1 | 1 | 1 | 29 | 022160007 | Thread tension regulating bushing | 1 | 1 | 1 |
| 7 | 022130007 | Thread guide on face plate | 1 | 1 | 1 | 30 | 022160008 | Set screw | 1 | 1 | 1 |
| 8 | 022130008 | Face plate screw | 3 | 3 | 3 | 31 | 022160009 | Thread tension releasing pin | 1 | 1 | 1 |
| 9 | 022140001 | Back plate | 1 | 1 | 1 | 32 | 022100013 | Set screw | 1 | 1 | 1 |
| 10 | 022140002 | Gasket for rack plate | 1 | 1 | 1 | 33 | 022100014 | Thread guide for arm center | 1 | 1 | 1 |
| 11 | 022100006 | Set screw | 8 | 8 | 8 | 078100005 | Thread guide for arm center | 1 | 1 | 1 | |
| 12 | 022100007 | Washer | 8 | 8 | 8 | 34 | 022130006 | Set screw | 1 | 1 | 1 |
| 13 | 022100010 | Oil check window | 1 | 1 | 1 | 35 | 022100015 | Rubber plug | 2 | 2 | 2 |
| 14 | 022100011 | Three hole thread guide | 1 | 1 | 1 | 36 | 022100015 | Rubber plug | 1 | 1 | 1 |
| 15 | 022150001 | Spring for pre-tension | 1 | 1 | 1 | 37 | 124100005 | Needle plate | 1 | 1 | 1 |
| 16 | 022150002 | Discs for pre-tension | 2 | 2 | 2 | 048100004 | Needle plate | 1 | 1 | 1 | |
| 17 | 022150003 | Washer | 1 | 1 | 1 | 38 | 022100020 | Needle plate screw | 2 | 2 | 2 |
| 18 | 022150004 | Spring washer | 1 | 1 | 1 | 39 | 022170001 | Slide plate | 1 | 1 | 1 |
| 19 | S4A0105006 | Leg | 1 | 1 | 1 | 40 | 022170002 | Spring for slide plate | 1 | 1 | 1 |
| 20 | 022150005 | Thread guide for pre-tension | 1 | 1 | 1 | 41 | 022170003 | Screw | 2 | 2 | 2 |
| 21 | 124130001 | Knob for thread tension regulator | 1 | 1 | 1 | 42 | 048100005 | Washer | 3 | 3 | 3 |
| 22 | 022160010 | Thumb nut revdution stoper | 1 | 1 | 1 | 43 | S4A0400011 | Washer | 2 | 2 | 2 |
| 23 | 022160001 | Thread tension stud | 1 | 1 | 1 | 44 | 057100008 | Ruler plate | 1 | 1 | 1 |
| 24 | 124130002 | Thread tension spring | 1 | 1 | 1 | 45 | 124100004 | Ruler screw | 2 | 2 | 2 |
| | 048110001 | Thread tension spring | 1 | 1 | 1 | 46 | 022100017 | Red rubber plug | 1 | 1 | 1 |
| | | | | | | 47 | 036550005 | Screw | 2 | 2 | 2 |
| | | | | | | 48 | 022900006 | Screw | 2 | 2 | 2 |



2. NEEDLE BAR AND THREAD TAKE-UP MECHANISM

| No. | Ref. No. | Description | Qt. | | |
|-----|-------------|-------------------------------------|-----|---|---|
| | | | M | H | B |
| 1 | 02221 | Thread take-up lever | 1 | 1 | 1 |
| | 04821 | Thread take-up lever | | 1 | 1 |
| | 07821 | Thread take-up lever | | 1 | 1 |
| 2 | 02210002 | Thread take-up link | 1 | 1 | 1 |
| 3 | 022210003 | Thread take-up lever hinge pin | 1 | 1 | 1 |
| 4 | 022210004 | Thread take-up crank | 1 | 1 | 1 |
| | 078210002 | Thread take-up crank | | 1 | 1 |
| 5 | 022210006 | Set screw (left hand thread.) | 2 | 2 | 1 |
| 6 | 02225 | Needle bar link ass | 1 | 1 | 1 |
| | 048210002 | Needle bar link ass | | 1 | 1 |
| 7 | 022210008 | Needle bar connecting bar joint | 1 | 1 | 1 |
| 8 | 022210009 | Screw | 1 | 1 | 1 |
| 9 | 022200002 | Screw | 1 | 1 | 1 |
| 10 | 056200007 | Take-up lever guard | 1 | 1 | 1 |
| | 078200002 | Take-up lever guard | | 1 | 1 |
| 11 | 022200004 | Screw | 1 | 1 | 1 |
| 12 | 02220001 | Needle bar crank | 1 | 1 | 1 |
| | 04822001 | Needle bar crank | | 1 | 1 |
| 13 | 048220002 | Screw | 1 | 1 | 1 |
| 14 | 022200006 | Screw | 1 | 1 | 1 |
| 15 | 022200007 | Thread take-up crank position screw | 1 | 1 | 1 |
| 16 | 153200004 | Needle bar bushing (upper) | 1 | 1 | 1 |
| 17 | 022200009 | Set screw | 1 | 1 | 1 |
| 18 | 022200010 | Felt plug | 1 | 1 | 1 |
| 19 | 022200011 | Red rubber plug (Ø8) | 1 | 1 | 1 |
| 20 | 153200005 | Needle bar bushing (lower) | 1 | 1 | 1 |
| | 124200006 | Needle bar bushing (lower) | | 1 | 1 |
| 21 | 022200002 | Thread guide for needle bar bushing | 1 | 1 | 1 |
| 22 | 153200003 | Needle bar | 1 | 1 | 1 |
| | 078200004 | Needle bar | | 1 | 1 |
| 23 | 048200004 | Thread guide for needle bar | 1 | 1 | 1 |
| 24 | 022200016 | Needle14# DP x 1 | 1 | 1 | 1 |
| | S15.0901012 | Needle18# DP x 5 | | 1 | 1 |
| | S15.0901013 | Needle22# DP x 5 | | 1 | 1 |
| 25 | 022200017 | Needle clamp screw | 1 | 1 | 1 |
| 26 | 022200018 | Needle bar connecting link guide | 1 | 1 | 1 |
| 27 | 022200019 | Set screw | 2 | 2 | 2 |
| 28 | 022200020 | Slide block | 1 | 1 | 1 |
| 29 | 022220003 | Thread take-up crank position screw | 1 | 1 | 1 |

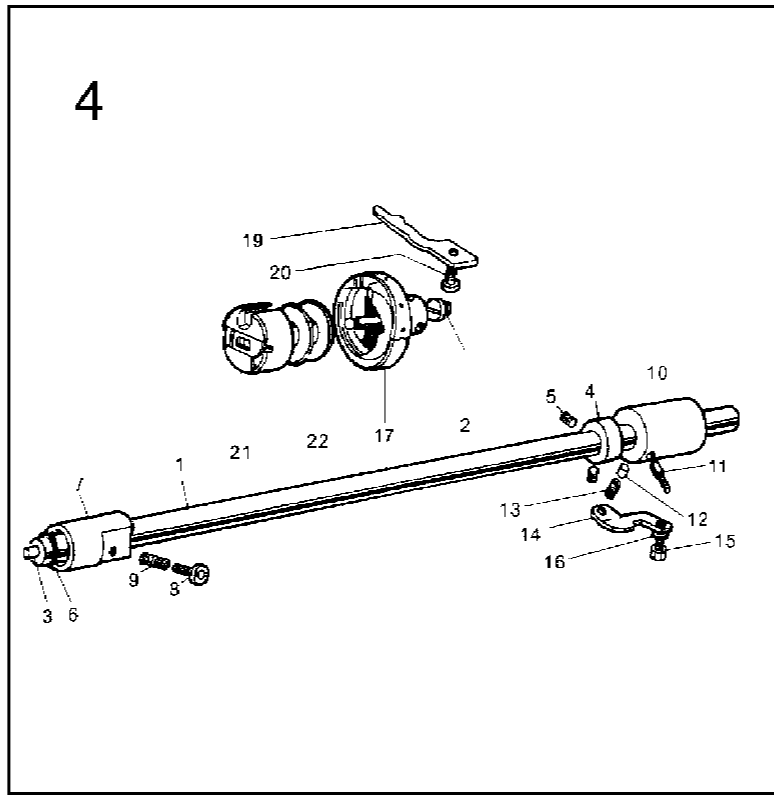


3. ARM SHAFT AND VERTICAL SHAFT MECHANISM

| No. | Ref. No. | Description | Qt. | | |
|-----|-----------|---------------------------------------|-----|---|---|
| | | | M | H | B |
| 1 | 124310001 | Arm shaft | 1 | 1 | 1 |
| 2 | 022310002 | Rubber plate | 1 | 1 | 1 |
| 3 | 022320001 | Collar for arm shaft | 1 | 1 | 1 |
| 4 | 022320002 | Set screw | 2 | 2 | 2 |
| 5 | 022300003 | Arm shaft bushing (left) | 1 | 1 | 1 |
| 7 | 022300004 | Arm shaft bushing (Middle) | 1 | 1 | 1 |
| 8 | 022200002 | Set screw | 1 | 1 | 1 |
| 9 | 108300005 | Arm shaft bushing (right) | 1 | 1 | 1 |
| 10 | 124330002 | Oil seal | 1 | 1 | 1 |
| 11 | 153310001 | Balance wheel | 1 | 1 | 1 |
| 12 | 022330002 | Set screw | 2 | 2 | 2 |
| 14 | 036300003 | Eccentric wheel | 1 | 1 | 1 |
| | 114300001 | Eccentric wheel | | 1 | 1 |
| 15 | 022100013 | Eccentric wheel screw | 2 | 2 | 2 |
| 16 | 036300004 | Spacer | 1 | 1 | 1 |
| 17 | 022343001 | Crank rod for lifting rock shaft | 1 | 1 | 1 |
| 18 | 022360001 | Vertical shaft | 1 | 1 | 1 |
| 19 | Z0A180891 | Bevel gear for arm shaft | 1 | 1 | 1 |
| 20 | Z0A180892 | Bevel gear for vertical shaft (upper) | 1 | 1 | 1 |
| 21 | 022220003 | Set screw | 8 | 8 | 8 |
| 22 | Z0A180886 | Bevel gear for hook shaft | 1 | 1 | 1 |
| 23 | Z0A180885 | Bevel gear for vertical shaft (lower) | 1 | 1 | 1 |
| 24 | 02230011 | Vertical shaft bushing (upper) | 1 | 1 | 1 |
| 25 | 022300112 | Vertical shaft bushing (lower) | 1 | 1 | 1 |
| | 078300002 | Vertical shaft bushing (lower) | | 1 | 1 |
| 26 | 022200002 | Set screw | 2 | 2 | 2 |
| 27 | 022342001 | Retaining ring | 1 | 1 | 1 |
| 28 | 166300001 | Screw | 3 | 3 | 3 |

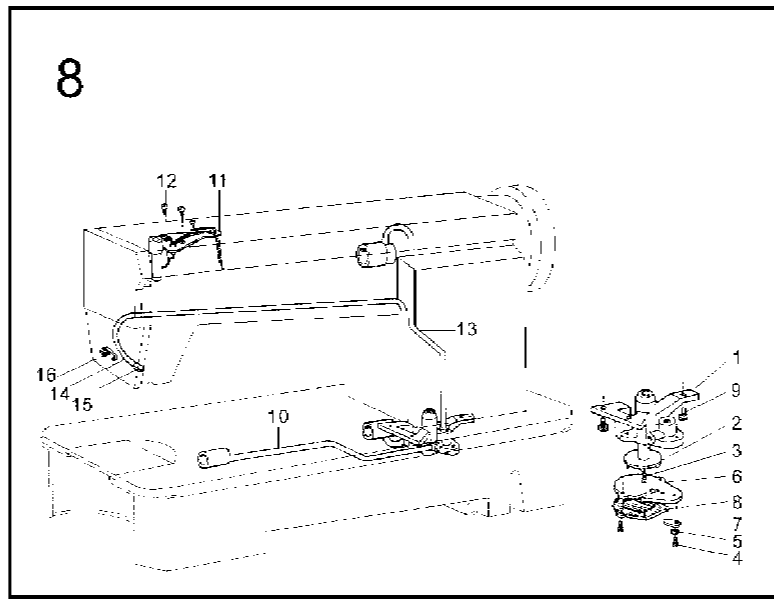
7. 压脚部件

| 序号 | 图号 | 名称 | 件数 | | |
|----|-----------|------------------------|----|---|---|
| | | | M | H | B |
| 1 | 022710001 | 压脚扳手 | 1 | 1 | 1 |
| 2 | 022100006 | 压脚扳手螺钉 | 1 | 1 | 1 |
| 3 | 022700002 | 压脚扳手凸轮 | 1 | 1 | 1 |
| 4 | 036620002 | 压脚杆提升凸轮油封 (4.5 x 1.8G) | 1 | 1 | 1 |
| 5 | 067700002 | 压脚护簧 | 1 | 1 | 1 |
| 6 | 022721001 | 膝控提升杆(左) | 1 | 1 | 1 |
| 7 | 022722001 | 松线凸轮 | 1 | 1 | 1 |
| 8 | 022723001 | 膝控提升杆(左)螺钉 | 1 | 1 | 1 |
| 9 | 022720002 | 铰链螺钉 | 2 | 2 | 2 |
| 10 | 022720003 | 膝控提升杆 | 1 | 1 | 1 |
| 11 | 022700005 | 松线凸轮螺钉 | 1 | 1 | 1 |
| 12 | 022700006 | 松线杆 | 1 | 1 | 1 |
| 13 | 022730001 | 膝控提升杆(右) | 1 | 1 | 1 |
| 14 | 022730002 | 膝控提升杆(右)弹簧 | 1 | 1 | 1 |
| 15 | 022730003 | 膝控提升杆 | 1 | 1 | 1 |
| 16 | 022700006 | 弹簧轴 | 1 | 1 | 1 |
| 17 | 022700009 | 压脚杆轴套 | 1 | 1 | 1 |
| 18 | 022700010 | 压脚杆 | 1 | 1 | 1 |
| 19 | 022740001 | 压脚杆导架 | 1 | 1 | 1 |
| 20 | 022100013 | 压脚杆导架螺钉 | 1 | 1 | 1 |
| 21 | 022100012 | 压脚杆弹簧导柱 | 1 | 1 | 1 |
| 22 | 022700013 | 压脚杆弹簧 | 1 | 1 | 1 |
| | 048700002 | 压脚杆弹簧 | | 1 | 1 |
| 23 | 022750001 | 调压螺钉 | 1 | 1 | 1 |
| 24 | 022750002 | 调压螺钉锁紧螺母 | 1 | 1 | 1 |
| 25 | 022700015 | 压脚螺钉 | 1 | 1 | 1 |
| 26 | 02276 | 压脚组件 | 1 | 1 | 1 |
| | 04871 | 压脚组件 | | 1 | 1 |
| 27 | 022700016 | 大线钩 | 1 | 1 | 1 |
| 28 | 022200004 | 大线钩螺钉 | 1 | 1 | 1 |
| 29 | 022730004 | 膝控提升杆(右)螺钉 | 1 | 1 | 1 |
| 30 | 022100007 | 压脚扳手螺钉垫片 | 1 | 1 | 1 |



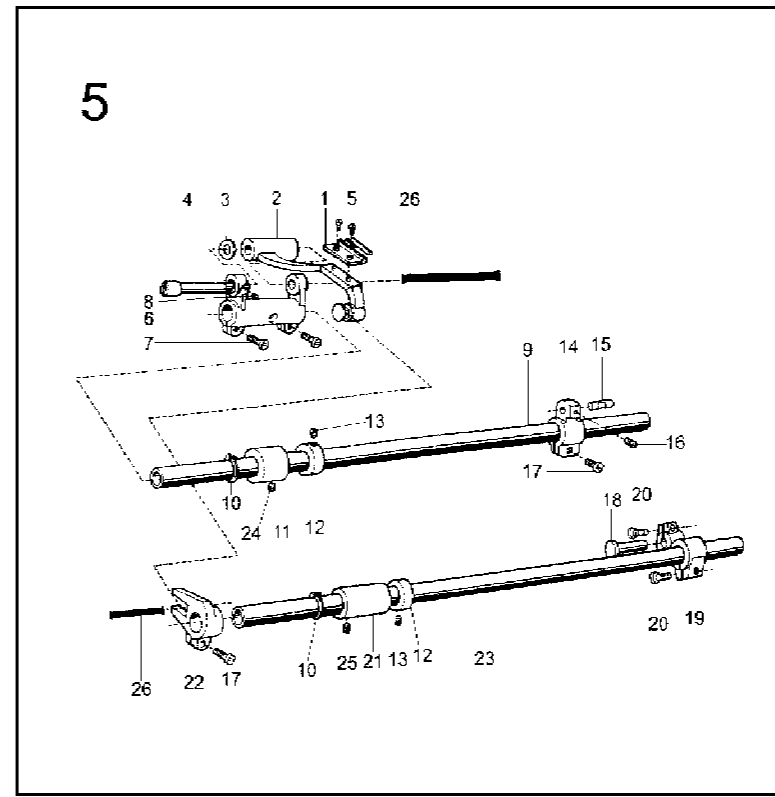
4. ROTATING HOOK MECHANISM

| No. | Ref. No. | Description | Qt. | | |
|-----|------------|---------------------------------|-----|---|---|
| | | | M | H | B |
| 1 | 036440001 | Hook shaft | 1 | 1 | 1 |
| | 120400001 | Rotating hook shaft | | 1 | 1 |
| 2 | 022411001 | Filter screw | 1 | 1 | 1 |
| 3 | 022411002 | Filter | 1 | 1 | 1 |
| 4 | 022420001 | Collar for hook shaft | 1 | 1 | 1 |
| 5 | 022200009 | Set screw | 2 | 2 | 2 |
| 6 | 022400109 | Oil seal for rotating | 1 | 1 | 1 |
| 7 | 022400004 | Hook shaft bushing (left) | 1 | 1 | 1 |
| 8 | 022400005 | Oil adjusting screw | 1 | 1 | 1 |
| 9 | 022400006 | Spring for oil adjuster | 1 | 1 | 1 |
| 10 | 036460001 | Hook shaft bushing (right) | 1 | 1 | 1 |
| 11 | 022430002 | Oil pipe for hook shaft bushing | 1 | 1 | 1 |
| 12 | 036400015 | Plunger | 1 | 1 | 1 |
| 13 | 036400016 | Plunger spring | 1 | 1 | 1 |
| 14 | 022400010 | Guide plate | 1 | 1 | 1 |
| | 078400006 | Guide plate | | 1 | 1 |
| 15 | 022300006 | Screw | 1 | 1 | 1 |
| 16 | S4A0400011 | Spring washer | 1 | 1 | 1 |
| 17 | 02247 | Rotating hook | 1 | 1 | 1 |
| | 04842 | Rotating hook | | 1 | 1 |
| | 07842 | Rotating hook | | 1 | 1 |
| 19 | 022400013 | Rotating hook positioner | 1 | 1 | 1 |
| | 048400002 | Rotating hook positioner | | 1 | 1 |
| | 078400003 | Rotating hook positioner | | 1 | 1 |
| 20 | 022400015 | Screw | 1 | 1 | 1 |
| 21 | 02246 | Bobbin case | 1 | 1 | 1 |
| | 07846 | Bobbin case | | 1 | 1 |
| 22 | 036400006 | Bobbin | 1 | 1 | 1 |
| | 048400003 | Bobbin | | 1 | 1 |
| | 078400005 | Bobbin | | 1 | 1 |



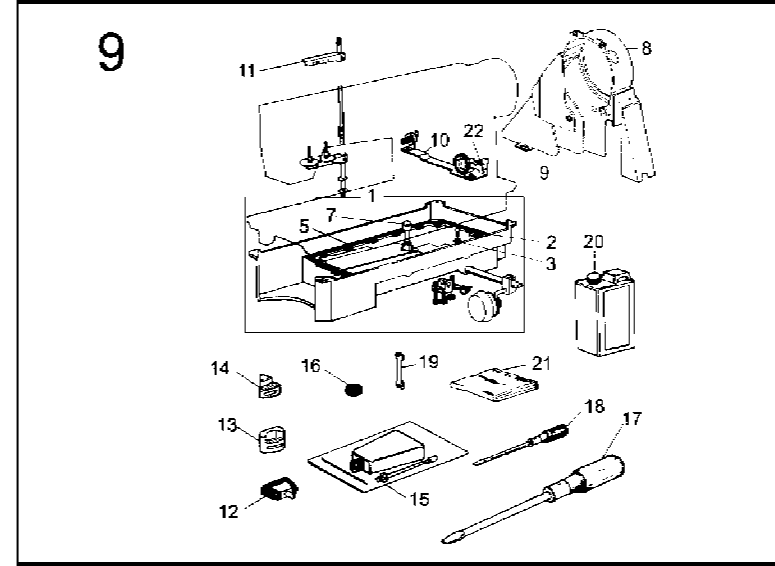
8. LUBRICATION MECHANISM

| No. | Ref. No. | Description | Qt. | | |
|-----|------------|----------------------------------|-----|---|---|
| | | | M | H | B |
| 1 | 022800001 | Oil pump body | 1 | 1 | 1 |
| 2 | 022800002 | Oil pump impeller | 1 | 1 | 1 |
| 3 | 022800003 | Screw | 1 | 1 | 1 |
| 4 | 022800004 | Screw | 3 | 3 | 3 |
| 5 | S4A0400012 | Spring washer | 1 | 1 | 1 |
| 6 | 022800006 | Oil pump fitting plate | 1 | 1 | 1 |
| | 078800001 | Oil pump fitting plate | | 1 | 1 |
| 7 | 022800007 | Oil adjusting plate | 1 | 1 | 1 |
| 8 | 022810001 | Oil pump screen complete | 1 | 1 | 1 |
| 9 | 022800009 | Screw | 3 | 3 | 3 |
| 10 | 022820N | Oil pipe for hook shaft | 1 | 1 | 1 |
| 11 | 022831 | Oil braid fitting plate | 1 | 1 | 1 |
| 12 | 022700015 | Screw | 2 | 2 | 2 |
| 13 | 022840N | Oil pipe for arm shaft | 1 | 1 | 1 |
| | 078800002 | Oil pipe for arm shaft | | 1 | 1 |
| 14 | 022800014 | Oil returning pipe | 1 | 1 | 1 |
| 15 | 022800015 | Felt pouch for return oil filter | 1 | 1 | 1 |
| 16 | 036A00002 | Spring for oil felt | 1 | 1 | 1 |



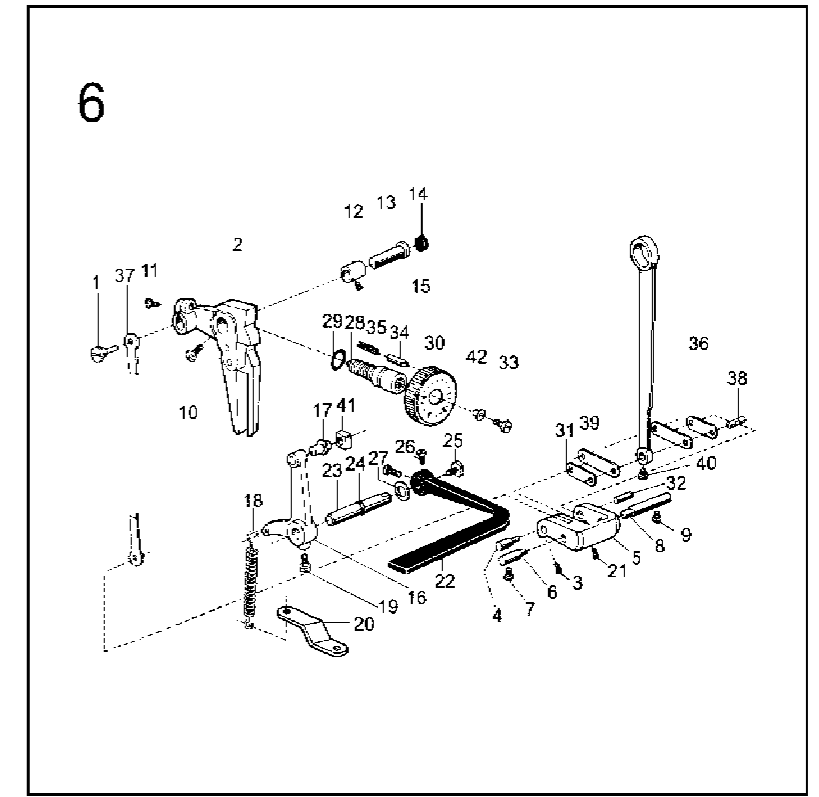
5. FEEDING AND FEED LIFTING MECHANISM

| No. | Ref. No. | Description | Qt. | | |
|-----|------------|---------------------------------------|-----|---|---|
| | | | M | H | B |
| 1 | 022610003 | Feed dog | 1 | 1 | 1 |
| | 048610002 | Feed dog | | 1 | 1 |
| 2 | 036411 | Feed bar | 1 | 1 | 1 |
| 3 | 02210006 | Washer | 1 | 1 | 1 |
| 4 | 036410002 | Feed bracket shaft | 1 | 1 | 1 |
| 5 | 022610004 | Screw | 2 | 2 | 2 |
| 6 | 022611001 | Feed rock bracket arm | 1 | 1 | 1 |
| 7 | 022612001 | Screw | 2 | 2 | 2 |
| 8 | 022200019 | Screw | 1 | 1 | 1 |
| 9 | 124600002 | Feed rock shaft | 1 | 1 | 1 |
| 10 | S4A0500010 | C-type stop ring | 2 | 2 | 2 |
| 11 | 022600004 | Feed rock shaft bushing | 1 | 1 | 1 |
| 12 | 022620001 | Collar | 2 | 2 | 2 |
| 13 | 022320002 | Set screw | 4 | 4 | 4 |
| 14 | 036400003 | Feed rock shaft crank (right) | 1 | 1 | 1 |
| | 114400001 | Feed rock shaft crank (right) | | 1 | 1 |
| 15 | 036400204 | Feed link stud | 1 | 1 | 1 |
| 16 | 036550005 | Set screw | 1 | 1 | 1 |
| 17 | 022640003 | Screw | 2 | 2 | 2 |
| 18 | 022600007 | Hinge | 1 | 1 | 1 |
| 19 | 036400017 | Feed lifting rock shaft crank (right) | 1 | 1 | 1 |
| 20 | 022600016 | Screw | 2 | 2 | 2 |
| 21 | 022600012 | Bushing for feed lifting rock shaft | 1 | 1 | 1 |
| 22 | 036484001 | Feed lifting shaft crank | 1 | 1 | 1 |
| 23 | 124600003 | Feed lifting rock shaft | 1 | 1 | 1 |
| 24 | 022200009 | Set screw | 1 | 1 | 1 |
| 25 | 022200002 | Set screw | 1 | 1 | 1 |
| 26 | 036410003 | Wick | 2 | 2 | 2 |



9. OIL RESERVOIR AND OTHER ACCESSORIES

| No. | Ref. No. | Description | Qt. | | |
|-----|-------------|-----------------------------|-----|---|---|
| | | | M | H | B |
| 1 | 036C10001 | Oil reservoir complete | 1 | 1 | 1 |
| 2 | 022910002 | Oil drain screw | 1 | 1 | 1 |
| 3 | 022910003 | Washer | 1 | 1 | 1 |
| 5 | 022910005 | Gasket for oil reservoir | 1 | 1 | 1 |
| 7 | 166FD1001 | Knee lifter lifting rod | 1 | 1 | 1 |
| 8 | 124920005 | Belt guard complete | 1 | 1 | 1 |
| 9 | 124920001 | Belt guard complete (S) | 1 | 1 | 1 |
| 10 | 006FD1001 | Thread winder complete | 1 | 1 | 1 |
| 11 | 006FD0030 | Spool stand | 1 | 1 | 1 |
| 12 | 02299 | Machine head hinge complete | 2 | 2 | 2 |
| 13 | 022900009 | Cushion (big) | 2 | 2 | 2 |
| 14 | 022900010 | Cushion (small) | 2 | 2 | 2 |
| 15 | W050202001 | Oil pot | 1 | 1 | 1 |
| 16 | W050103001 | Magnet | 1 | 1 | 1 |
| 17 | W050102050 | Screwdriver (long) | 1 | 1 | 1 |
| 18 | W050102051 | Screwdriver (short) | 1 | 1 | 1 |
| 19 | W210105011 | Double-open-end wrench | 1 | 1 | 1 |
| 20 | W0502020091 | Oil tank | 1 | 1 | 1 |
| 21 | W060302036 | Machine cover | 1 | 1 | 1 |
| 22 | 006F40001 | Bobbin winder stop latch | 1 | 1 | 1 |
| | 006FD0104 | Bobbin winder stop latch | | 1 | 1 |



6. STITCH LENGTH REGULATING MECHANISM

| No. | Ref. No. | Description | Qt. | | |
|-----|-----------|----------------------------|-----|---|---|
| | | | M | H | B |
| 1 | 036500001 | Connecting stud | 1 | 1 | 1 |
| 2 | 057500001 | Feed regulator | 1 | 1 | 1 |
| | 124500003 | Feed regulator | | 1 | 1 |
| 3 | 036550008 | Screw | 1 | 1 | 1 |
| 4 | 036550009 | Lever link eccentric shaft | 1 | 1 | 1 |
| 5 | 036550010 | Lever regulator | | | |